

Teachers/ Adults Side (1)

# Liverpool Biennial

Building a Biennial, KS3 Maths

The Learner will learn to convert measurements and draw accurate angles and precise sizes to represent an architectural space.

Estimated time = 40 minutes

## Curriculum Extract:

Pupils should be taught:

Geometry and measures:

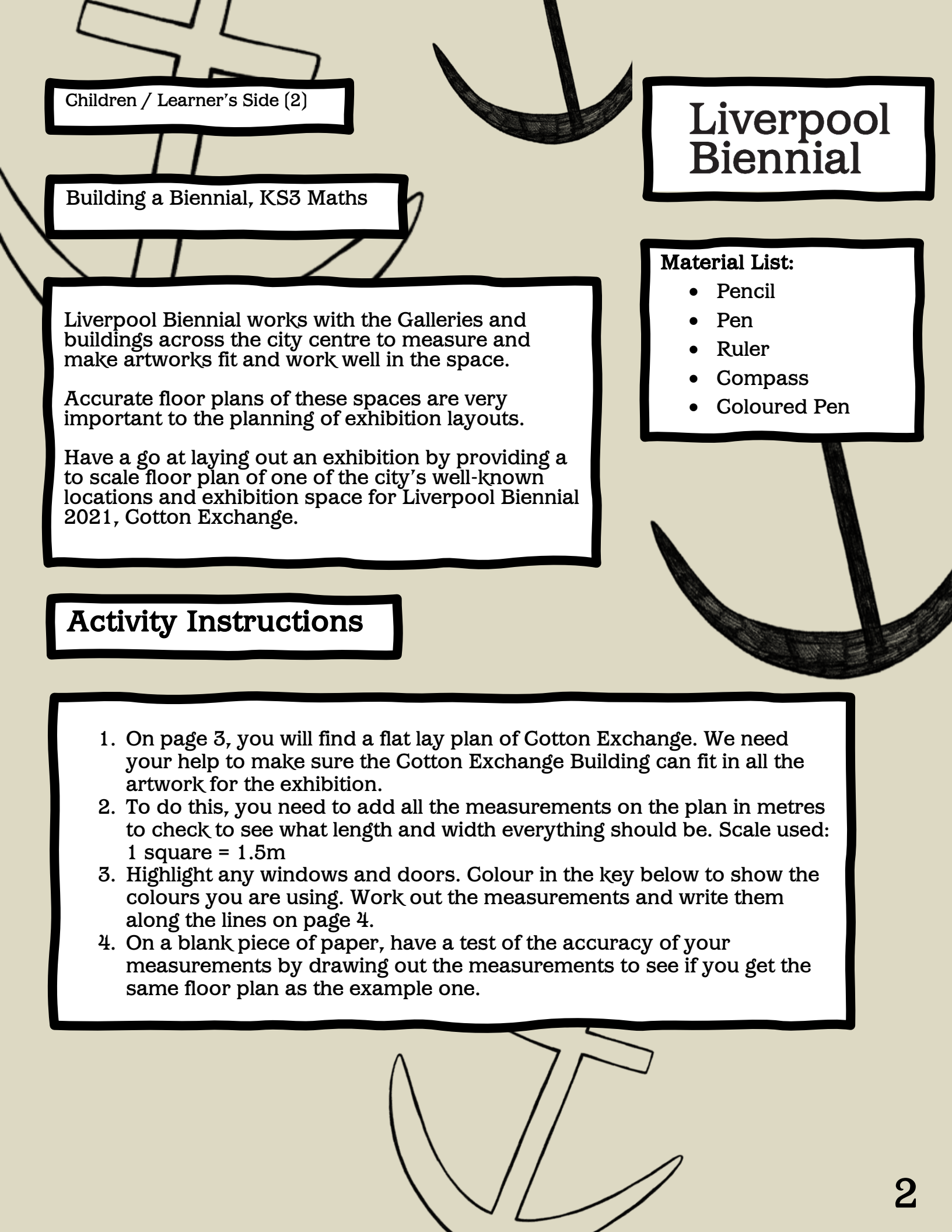
- Draw and measure line segments and angles in geometric figures, including interpreting scale drawings
- Describe, sketch and draw using conventional terms and notations: points, lines, parallel lines, perpendicular lines, right angles, regular polygons, and other polygons that are reflectively and rotationally symmetric

## Key Terms:

**Biennial** - An event lasting for or occurring every two years.

**Exhibition** - A display of artworks, usually within a museum or gallery space.

**Flat lay floor plan** - A scale drawing of a room, showing a view from above of the layout and relationships between rooms, spaces and the objects within them. They are used especially for planning effective use and arrangement of objects/furniture.



Children / Learner's Side (2)

Building a Biennial, KS3 Maths

Liverpool Biennial works with the Galleries and buildings across the city centre to measure and make artworks fit and work well in the space.

Accurate floor plans of these spaces are very important to the planning of exhibition layouts.

Have a go at laying out an exhibition by providing a to scale floor plan of one of the city's well-known locations and exhibition space for Liverpool Biennial 2021, Cotton Exchange.

## Activity Instructions

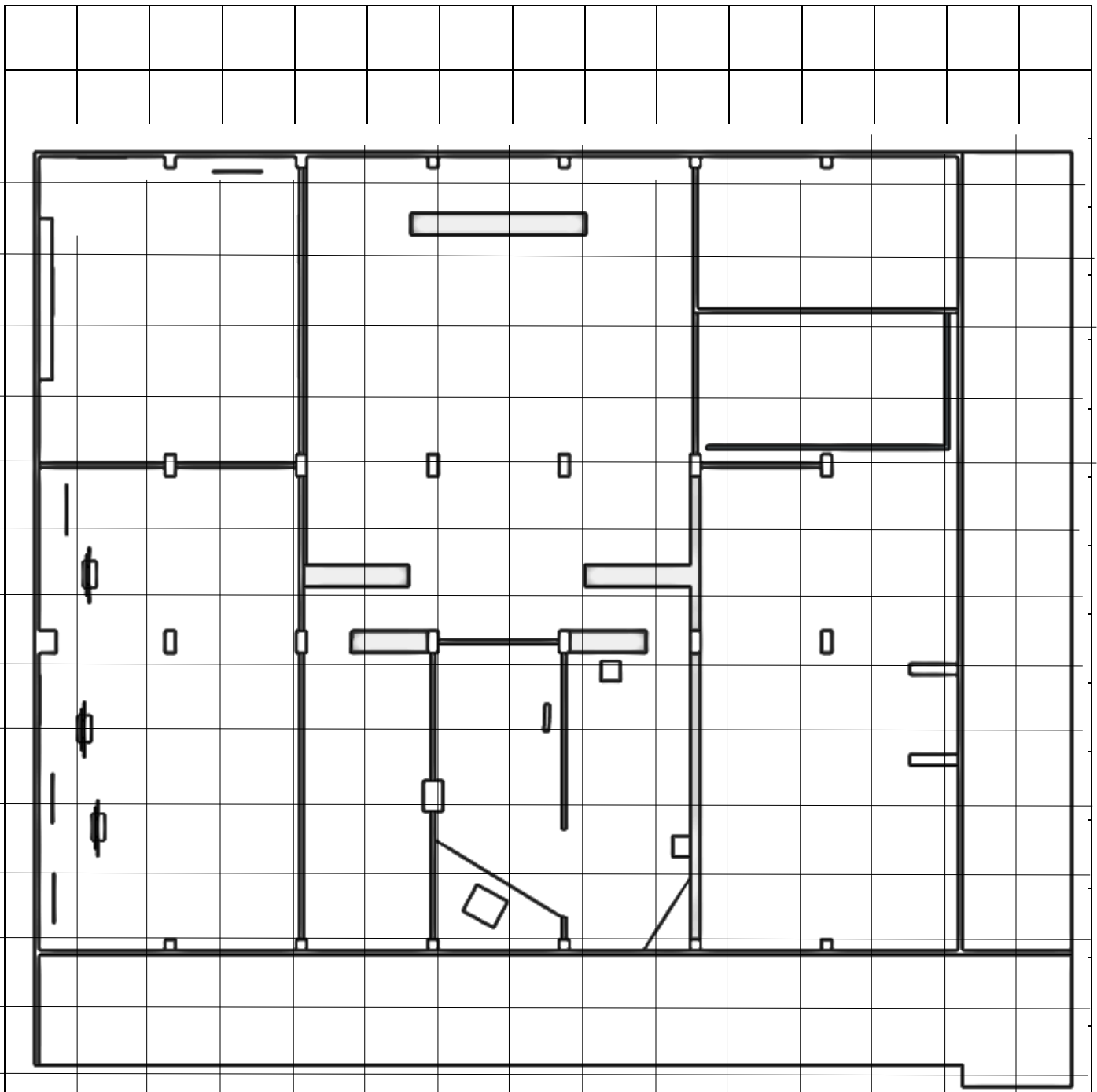
1. On page 3, you will find a flat lay plan of Cotten Exchange. We need your help to make sure the Cotten Exchange Building can fit in all the artwork for the exhibition.
2. To do this, you need to add all the measurements on the plan in metres to check to see what length and width everything should be. Scale used: 1 square = 1.5m
3. Highlight any windows and doors. Colour in the key below to show the colours you are using. Work out the measurements and write them along the lines on page 4.
4. On a blank piece of paper, have a test of the accuracy of your measurements by drawing out the measurements to see if you get the same floor plan as the example one.

# Liverpool Biennial

## Material List:

- Pencil
- Pen
- Ruler
- Compass
- Coloured Pen

# Liverpool Biennial



## KEY

One Square = 1.5 meters

Colour in the key for the windows and doors and show them on the plan by colouring in the line where you think they belong.

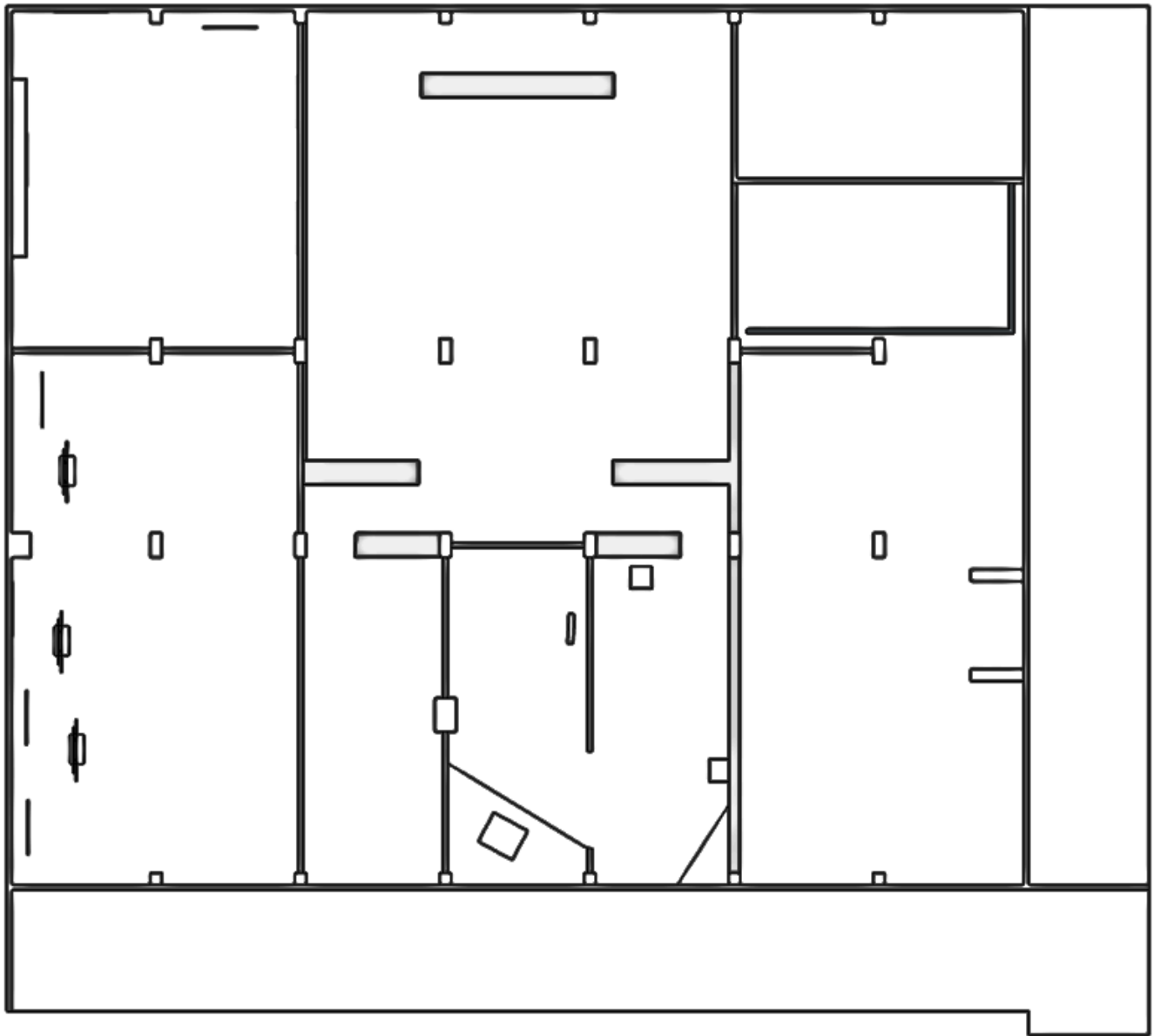


Windows



Doors

Add your measurements and colour coding for windows and doors on this plain plan.



Want to do more like this? Have a look at our website: [www.liverpoolbiennial2021.com/learn](http://www.liverpoolbiennial2021.com/learn)